

外籍人士 在烟工作生活指南

GUIDE FOR FOREIGNERS
LIVING AND WORKING IN YANTAI



前言

Preface

Dear foreign friends,

Welcome to the beautiful coastal city of Yantai.

To make your life, work and study more comfortable and convenient in Yantai, we have compiled the *Guide for Foreigners Living and Working in Yantai* (hereinafter referred to as the *Guide*) to provide you with the information services you need and facilitate your life and work in Yantai.

Available in Chinese, English, Japanese and Korean, the *Guide* introduces you to Yantai, and elaborates on issues concerning entry and exit management, entry and exit customs clearance, emergency rescue, public services, leisure and entertainment, and policies and regulations. We would like to express our heartfelt thanks to relevant departments for their strong support and assistance during the compilation of the *Guide*. With the help of the *Guide*, we



hope to provide the information you need to enjoy your life in Yantai.

The first edition of the *Guide* was published in 2019 and updated in 2021, which received praise from foreigners and society. As of September 2023, an electronic version of the *Guide* is available on the official website of the Yantai Municipal People's Government. You can also scan the QR code in this book to get the information you need.

We hope that the *Guide* will make your life and work in Yantai more convenient and enjoyable!

The Foreign Affairs Office of Yantai
Municipal People's Government
November 2023

Contents

Chapter I Profile of Yantai

I. Basic Information.....	2
II. Sister Cities.....	5
III. Government Affairs.....	7
IV. Government Affairs Service Hotline: 12345.....	12

Chapter II Entry and Exit Management

I. Entry and Exit Frontier Inspection.....	14
II. Entry, Exit and Stay (Residence).....	15

Chapter III Exit and Entry Customs Clearance

I. Health Quarantine.....	20
II. Travelers' Declaration.....	22
III. Entry of Special and Valuable Items.....	25
IV. Departure Tax Refund.....	26

Chapter IV Emergency Rescue

I. Police Emergency Number: 110.....	29
II. Fire Rescue.....	30
III. Medical Emergency Number: 120.....	31
IV. Road Accident Report Number: 122.....	31

Chapter V Public Services

I. Communication Services.....33

II. Banking Services.....34

III. Postal and Express Services.....35

IV. Residence.....36

V. Transportation.....41

VI. Education.....45

VII. Healthcare.....46

VIII. Marriage Registration.....49

IX. Adoption and Assistance.....51

X. Funeral.....53

Chapter VI Leisure and Entertainment

I. Diet.....55

II. Culture and Entertainment.....56

III. Tourism.....57

IV. Hotels.....58

V. Shopping.....58

VI. Sports.....58

VII. Religious Activities.....60

VIII. Holidays.....61

Chapter VII Policies and Regulations

I. Taxation and Tax Exemption.....65

II. Social Insurance Payment.....68

III. Medical Insurance Payment.....69

IV. Judicial Services.....70

24-hour Multilingual Service Hotline

0535-12345

Chapter I

Profile of Yantai

城市概況

第一章

I



With a long history, Yantai is one of the cradles of ancient Chinese culture. Early in the Late Pleistocene (about 10,000 years ago), there were humans dwelling in this region. During the Xia dynasty, Yantai was inhabited by the "Eastern Barbarians" (Dongyi) who founded a state here. During the Shang, Western Zhou and Spring and Autumn Periods, it came under the jurisdiction of the state of Lai and was later incorporated into the state of Qi during the Warring States Period. It was administered as the Qi Commandery in the Qin dynasty, renamed the Donglai Commandery in the Han dynasty and organized as the Donglai Kingdom in the Jin dynasty. It was titled Donglai and Changguang Commandery in the Southern and Northern dynasties, Laizhou in the Sui dynasty, Dengzhou and Laizhou in the Tang, Song and Yuan dynasties. It was then organized as Dengzhou Commandery and Laizhou Commandery in the Ming and Qing dynasties. The name Yantai (Smoke Tower) is derived from the watchtowers constructed on Mount Qi in the 31st year of the reign of the Hongwu Emperor of the Ming dynasty (1398). The towers were used to light signal fires and send smoke signals and called langyantai. In 1861, Yantai opened to international commerce as a treaty port. After this, 17 countries, including



the UK, France and the US successively established consulates in the region. After the founding of the People's Republic of China, Yantai was officially granted city status with the outlying towns of Wendeng and Laiyang attached as Special Regions in 1950. In 1958, Yantai was also established as a Special Region and became a prefecture-level city in November 1983. Yantai administers five districts (Zhifu District, Fushan District, Muping District, Laishan District, and Penglai District) and six county-level cities (Longkou City, Laiyang City, Laizhou City, Zhaoyuan City, Qixia City, and Haiyang City). It is also home to five economic and functional areas (Huang-Bohai New Area, Yantai Hi-tech Industrial Development Area, Yantai Free Trade Port Zone, Kunyu Mountain National Nature Reserve, and Changdao Marine Ecological Civilization Comprehensive Pilot Zone). Covering a land area of 13,900 square kilometers and a sea area of 12,300 square kilometers, the city has a permanent population of 7,058,700.

Located on the eastern corner of the Shandong Peninsula, Yantai is bordered by the Yellow and Bohai Seas, and lies across from Japan, South Korea and North Korea. This city's topography features low mountains and hills, and its highest point of elevation is the summit of Mount Kunyu at 922.8 meters. Yantai boasts a 702.5-kilometer-long coastline, and 230 offshore islands with a total length of 206.62 kilometers. It features a temperate continental monsoon climate, with four moderate seasons, humid air and mild climate. The annual average temperature in the city is 13.2°C .

The total length of highways across the city has reached 19,819.70 kilometers, including 668.05 kilometers of expressways. The city's ports have 244 berths for production





and 110 berths with a cargo volume of over 10,000 tons. Yantai provides direct shipping lines to more than 100 ports in over 70 countries and regions. Yantai Penglai International Airport, a national Category-I airport, has direct flights reaching over 50 domestic and international destinations.

Yantai has put a lot of focus on promoting the construction of an ecological civilization. The city's forest coverage rate is currently at 36.3%, and there are 17 forest parks and 23 nature reserves. The ambient air quality and water quality of centralized drinking water sources in urban areas are both up to the standards, and the seawater quality is good.

Yantai is renowned as a "land of fruits", and is an important fishery base in China. Yantai apple is a top brand in China's fruit industry and the city's Laiyang pears enjoy a good reputation. Yantai cherries are referred to as the first spring fruit in northern China. Yantai also produces some of the best wine in China, making the city the only international vine and wine city in Asia. In addition, Yantai is rich in marine fishery resources, including sea cucumber, shrimp, swimming crab, abalone, scallop and other varieties of seafood.



II. Sister Cities

As of September 2023, Yantai has established international sister-city relationships with 49 cities (regions) from 25 countries.

(I) Municipal-level Sister (Cooperative) Cities

· Asia:

Japan—Beppu, Miyako

South Korea—Gunsan, Wonju, Ulsan, Incheon, Ansan,

Buyeo, Pyeongtaek

Thailand—Phuket

Malaysia—Padawan

Pakistan—Lahore

Laos—Xaisomboun

Israel—Petah Tikva

· Europe:

Russia—Vladivostok, Rostov-on-Don

The UK—Angus

France—Quimper, Angers

Spain—Alcalá de Henares

Sweden—Örebro

Norway—Stavanger

Hungary—Szombathely, Miskolc

Bulgaria—Burgas

Greek—Chios

Serbia—Zrenjanin

Belarus—Pinsk



· North America:

The US—San Diego, Omaha

Jamaica—Kingston

· South America:

Chile—Temuco

Brazil—Aracaju

· Oceania:

Australia—Mackay, Isaac, Whitsunday, Charles Sturt

New Zealand—Tauranga

(II) District and City-level Sister (Cooperative) Cities

1. Zhifu District

Australia—South Australia—City of Port Adelaide

South Korea—Busan Metropolitan City—Dong District

South Korea—Ulsan Metropolitan City—Jung District

2. Penglai District

The US—California—Sonoma City

France—Maine-et-Loire—City of Saumur

Portugal—Leiria District—Leiria City

3. Haiyang

South Korea—Busan Metropolitan City—Gangseo District

4. Qixia

South Korea—Incheon Metropolitan City—Eastern District

5. Zhaoyuan

Korea—Seoul City—Gangseo District

6. Laizhou

South Korea—Jeju Special Self-Governing Province—
Jeju City

Spain—Cantabria—Laredo City



III. Government Affairs

The official website of Yantai Municipal People's Government (website: www.yantai.gov.cn), available in many different languages, is an online government affairs service platform for enterprises and the public, and is also a part of the national integrated online government affairs service platform. With various columns and complete functions, the website enables people to inquire about Yantai's city conditions, government public information, public service list, telephone numbers and addresses of government agencies and other information related to government affairs. It can also provide "one-stop online affairs handling" services for individuals and legal persons. Further, people can make consultations and express their demands online.

The business hours of the municipal government departments and agencies are 8:30-12:00 and 13:30-17:00 from Monday to Friday (except national statutory holidays) between November 1 and April 30, or 8:30-12:00 and 14:00-17:30 from Monday to Friday (except national public holidays) from May 1 to October 31.

(I) Government Affairs Service Center

Under Yantai Administrative Approval Service Bureau, Yantai Municipal Government Affairs Service Center is a comprehensive management service institution established by Yantai Municipal People's Government to handle aspects of administrative licenses within the municipal government's statutory authority, and offer government affairs service to the public. A reception desk is set up on the first floor of the hall of the Center, with staff providing consultation, introduction, and guidance services.

Address: No. 46 Yinhai Road, Laishan District, Yantai

Tel: 0535-6788800; 6788801

Official WeChat account: Yantai Government Affairs Service

Foreign-related Service Items of the Government Affairs Service Center

Service Items	Responsible Organizations	Tel
Joint Possessing in One Window for Foreigners' Work and Residence Permit	Yantai Administrative Approval Service Bureau; The Exit-entry Administration Branch of Yantai Municipal Public Security Bureau	0535-6788037
Short-term Practice License for Foreign Doctors	Yantai Administrative Approval Service Bureau	
Examination and Approval of Sino-foreign Joint-ventured and Cooperative Medical Institutions		
Examination and Approval of the Establishment of Sino-foreign Cooperative Vocational Skills Training Institutions		
Registration of Foreign-invested Enterprises	Yantai Market Supervision Authority Administrative Licensing Services Division	0535-6788036
Registration of Resident Representative Offices of Foreign Enterprises		
Filing of Relevant Matters of Foreign-invested Enterprises		
Business License of Foreign-invested Travel Agencies	Yantai Municipal Culture and Tourism Bureau Market Management Division	0535-6788855
Establishment of Foreign-invested Printing Enterprises		
House Purchase and Rental for Foreigners	Yantai National Security Bureau Window in the Government Affairs Service Center	0535-6631050
		0535-6631623
		0535-6631637

Contact Numbers of District- and City-level Government Affairs Service Centers

Name	Tel
Zhifu District	0535-6631787
Fushan District	0535-3029677
Laishan District	0535-6719426
Muping District	0535-3397600
Penglai District	0535-3350605
Haiyang	0535-3301025
Laiyang	0535-7285221
Qixia	0535-5265099
Longkou	0535-8542086
Zhaoyuan	0535-8166783
Laizhou	0535-2252138
Huang-Bohai New Area	0535-6119500
Yantai Hi-tech Industrial Development Area	0535-6922755
Changdao Marine Ecological Civilization Comprehensive Pilot Zone	0535-3215121
Kunyu Mountain National Nature Reserve	0535-4693155

Tips:

For information on the handling process of foreigners' work permits in China and the supporting materials required, please visit the website of Foreigners' Work Management Service System in China (website: fuwu.most.gov.cn) for inquiry.

(II) Consular Legalisation

If foreigners need to apply for consular legalisation, they need to apply for foreign-related notarial certificate that meets the requirements of consular legalisation at foreign-related notary organizations in all districts and cities of Yantai (please refer to the section of "Notary Services" on page 64 of the *Guide*), and go to the municipal foreign affairs office for consular legalisation with foreign-related notarial certificates, passports, copies and other relevant materials.

For the authentication of foreign embassies and consulates in China, please refer to the *Compilation of Consular Authentication Provisions of Foreign Embassies (Representative Offices)* in China in the China Consular Service Network (website: cs.mfa.gov.cn).

Service department: The Foreign Affairs Office of Yantai Municipal People's Government

Tel: 0535-6601183

Website: wb.yantai.gov.cn

(III) Foreigners Applying for Motor Vehicle Driving Licenses

1. Required documents for foreigners applying for a Chinese driving license

(1) Original passport and a Chinese translation of the information page

(2) Valid visa or a stay/residence permit of more than three months

(3) Temporary Accommodation Registration Certificate issued by Yantai Public Security Bureau

(4) Proof of physical condition

Specific process: The applicant shall bring the aforementioned documents to the service window at the driving management office for on-site acceptance. Once accepted, the applicant needs to register on the 12123 APP and schedule appointments for each subject examination. Upon successfully passing the examinations, a driver's license will be issued.

2. Materials required for foreigners to obtain a Chinese driving license when they have an overseas license

(1) Original passport and a Chinese translation of the information page

(2) Valid visa or a stay/residence permit of more than three months

(3) Original overseas driving license and a translated copy in Chinese

(4) Temporary Accommodation Registration Certificate issued by Yantai Public Security Bureau

(5) Proof of physical condition

Specific process: The applicant shall bring the aforementioned documents to the service window at the driving management office for on-site acceptance. To renew a C1 or C2 driving license, you must take the Subject 1 examination and schedule an on-site appointment. You can take the examination on the same day and receive a new license upon passing. To renew a Class A or B driving license, you must take the Subject 1, Subject 2, and Subject 3 examinations, following the regulations for examination appointments. After successfully passing the examinations, a new license will be issued.

Service department: Traffic Police Division of Yantai Public Security Bureau

Tel: 0535-6297625

Tips:

The translation institutions filed in the Drivers Management Office of Yantai Traffic Police Division are:

Yantai Transay Elite Translation Service Co., Ltd.

Tel.: 0535-6227448

Yantai Cent Translation Inc.

Tel.: 0535-6088177

Yantai Sanyou Translation Co., Ltd.

Tel.: 0535-6713797

Shandong Yijie Translation Co., Ltd.

Tel.: 0535-6962070

Gheson Translation Service Co., Ltd.

Tel.: 0535-5637768

车行万里



服务无疆

①

②

③

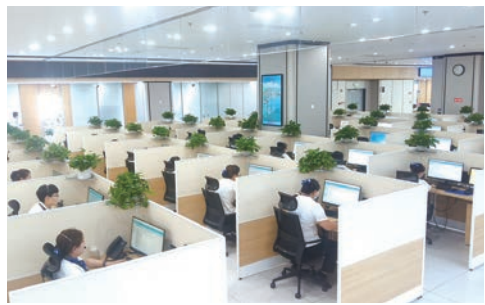
一窗受理 一证通办

IV. Government Affairs Service Hotline: 12345

The "12345 Government Affairs Service Hotline", "12345 Hotline" for short, provides around-the-clock manual services. You can also log in to the official WeChat account "Yantai 12345" and submit your appeals, comments, or suggestions in the "WeChat Appeals" column by providing texts and images.

The 12345 Hotline is a service platform set up by the Yantai Municipal People's Government, and is directly oriented to enterprises and the masses and accepts non-urgent appeals such as consultation, help, complaints, reports, opinions and suggestions on government affairs and public services within the functions of various government departments. The working procedure includes the 12345 staff recording the call and submitting the appeals to the relevant department. The relevant department will then send back the result to the caller who made an appeal and give the feedback to the 12345 staff, who are responsible for following up on the caller's evaluation of the handling result.

For the convenience of foreigners working and living in Yantai, the 12345 Hotline is interconnected with the English, Japanese, and Korean multilingual service hotlines of the municipal foreign affairs office, which can provide three-party call and instant translation services at any time.



24-hour Multilingual Service Hotline

0535-12345

Chapter II
Entry and Exit
Management

出
入
境
管
理

第二章

II



The 12367 service platform of the National Immigration Management Agency is a comprehensive service platform that uniformly accepts service demands such as business consultation, opinions and suggestions in the field of immigration management. It can classify and accept service demands such as policy consultation, opinions and suggestions related to immigration management put forward by Chinese or foreign personnel, and provide around-the-clock manual services in both Chinese and English.

I. Entry and Exit Frontier Inspection

I. Entry and Exit Frontier Inspection

When entering the country, you should fill in the entry cards of foreigners in advance, and accurately fill in the information, such as entry reasons, address in China, entry and exit documents, Chinese name (if any), and telephone number.

Foreigners who pass through fast customs clearance are not required to fill in the entry cards of foreigners.

Foreigners who meet the following conditions can apply for fast customs clearance:

1. Foreigners holding foreign e-passports and residence permits for more than 6 months can apply to the port frontier inspection authorities with self-service customs clearance conditions for information filing, and then go through fast customs clearance within the validity period of their passports and residence permits (whichever is shorter).



2. Foreigners holding foreign passports and permanent residence permits in China.

Passengers who use the fast inspection channel for frontier inspection can print the record voucher of the latest exit or entry from the port free of charge on the self-service printer behind the fast inspection channel. The entry-exit record voucher has the same effect as the Chinese frontier inspection seal stamped on the entry-exit document by the frontier inspection authority.

Hotline of Yantai Airport Entry-Exit Frontier Inspection Station: 0535-2602110

Hotline of Yantai Entry-Exit Frontier Inspection Station: 0535-6505110

Official website of National Immigration Administration: www.nia.gov.cn

Official WeChat account: National Immigration Administration



II. Entry, Exit and Stay (Residence)

The Exit and Entry Administration Law of the People's Republic of China and the Regulations of the People's Republic of China on Administration of the Entry and Exit of Foreigners are the main legal basis for the issuance of visas, stay permits and residence permits for foreigners by the exit and entry departments of public security organs.

Unless otherwise stipulated, foreigners applying for a visa, stay permit or residence permit shall apply in person and complete relevant formalities at exit and entry departments of public security organs.

(I) Extension, Change and Re-issuance of Visa

1. Extension of Visa

If the original reason for which foreigners apply for the visa has not yet terminated or for other legitimate reasons, foreigners entering China with a visa, who need to stay beyond the expiration date specified in the visa and are not required to change the type of visa, may apply for extending the visa.

2. Change of Visa

If after entering with a visa, a foreigner changes his or her purpose of stay, is granted entry conveniences in accordance with relevant provisions of the State, starts using a new passport, or needs to stay separately from his or her tour group after entering China with a group visa due to objective reasons, he or she may apply for a change of visa.

3. Re-issuance of Visa

If the visa of a foreigner in China is lost, damaged, destroyed, stolen or robbed, he or she may apply for re-issuance of that visa, with the same type, valid period and stay period as the original one.

(II) Stay Permit

1. Application of Stay Permit

If visa-exempt foreigners need to stay in China longer than the visa-free period, or foreign seamen and their accompanying family members need to leave the cities where the ports are located, or under other circumstances where foreigners need to apply for stay permits, they may apply for such permits.



2. Change and Re-issuance of Stay Permit

(1) Foreigners holding stay permits who are not able to leave China within the valid period due to objective reasons, may apply for a change of stay permit.

(2) If the stay permit of a foreigner in China is lost, damaged, destroyed, stolen or robbed, he or she may apply for the re-issuance of the stay permit with the same stay period as the original one.

(III) Residence Permit

1. Application of Residence Permit

Foreigners whose visas specify that a residence permit is necessary after their entry, foreigners with expertise and foreign investors who conform to relevant State regulations, and foreigners who need to change their status from stay to residence for humanitarian or other reasons, shall apply for residence permits. There are residence permits for work, study, journalism, reunion and personal matters.

2. Extension, Change and Re-issuance of Residence Permit.

Foreigners who need to extend their endurance of residence may apply for an extension of their residence permit. If the reason of stay stated in the permit has changed, the holder shall apply for a change of residence permit. If the residence permit of a foreigner is lost, damaged, destroyed, stolen or robbed, he or she may apply for re-issuance of the residence permit.

(IV) Port Visa

Foreigners who need to enter China urgently for humanitarian reasons, are invited to enter China for urgent business or rush repair work, or have other urgent needs, and hold materials that prove the relevant departments' approval of applying for port visas, as well as foreign tourist groups invited by approved travel agencies with appropriate qualifications, may apply for port visas.

(V) Permanent Resident ID Card for Foreigners (commonly known as "Five-Star Card")



Foreigners who have made prominent contributions to the economic and social development of China or who meet other conditions for permanent residence may apply for permanent residence in China. As an individual legal identity document that can be used separately, the permanent resident ID card for foreigners is applied equivalently to the resident identity card in a wider range and more fields.

Service department concerned:
The Exit-entry Administration Branch of Yantai Municipal Public Security Bureau
Tel: 0535-6297050
Website: www.nia.gov.cn
Official WeChat account: The Exit-entry Administration Branch of Yantai Municipal Public Security Bureau

中国移民局
CHINA IMMIGRATION

中华人民共和国
外国人永久居留身份证
与外国护照

功能用途对比说明

对比项目

外国人 永久居留身份证	外国护照
使用范围	
中国境内 国际通用	
身份证件效力	
有有	
入境	
免办 中国签证证件 需与本人有效 外国护照一同使用	需办理 中国签证 或居留证件 (免办签证除外)
境内停留居留	
永久居留	签证证件规定的 期限或免签政策 规定的停留期
辨识度	
规格式样符合我国 公共安全行业标准 易于辨识	各国护照式样不一 辨识难度大
证件号码	
统一编制唯一号码 终身不变	号码 随护照换领变更
机读应用	
可使用 身份证件 阅读机具读取	不能 通过身份证件 阅读机具读取
身份认证	
可通过官方平台 在线认证	无法 在线认证
签发机关	
中国 国家移民管理局	外国 政府主管部门

Chapter III
Exit and Entry
Customs Clearance

出入境
通关

第三章
III



I. Health Quarantine

(I) Health Declaration

In order to protect the health and safety of inbound and outbound travelers and safeguard the ports, foreigners entering or exiting China must coordinate with the customs quarantine officers. Foreigners who have one or more of the symptoms of fever, vomiting, cough, dyspnea, diarrhea, headache, arthralgia, erythra, jaundice and mucosal bleeding need to make a declaration to customs quarantine officers and help them with the investigation. Foreigners with severe mental illness, infectious tuberculosis, or any other infectious disease which may cause significant harm to public health are forbidden to enter China. Foreigners from yellow fever-infected areas have to show valid yellow fever vaccination certificates to the customs quarantine officers when entering China.

Foreigners entering or exiting China should coordinate with quarantine measures such as temperature monitoring, and medical inspection and investigation. Those who have symptoms of infectious diseases or have been diagnosed with infectious diseases must voluntarily declare their health conditions to the customs.

Customs reminder: For your and others' health, please fill out the Health Declaration Form truthfully without false or deceptive information. Otherwise, you may be subject to punishment under the crime of impairing the frontier health and quarantine.

(II) Physical Examination

According to *the Frontier Health and Quarantine Law of the People's Republic of China* and detailed rules for the enforcement, foreigners (business people, students, experts and professors, engineering technicians, people from specialized fields or staff of foreign institutions in China), overseas Chinese and people from Hong Kong,

Macao and Taiwan who will stay in China for more than one year need to apply for the health certificate. The health certificate remains valid for 6 months since the day of issuing and must be issued by the designated health care departments or normal health care departments. Those issued by normal departments must be notarized.

(III) Pet Entry

The General Administration of Customs of China carries out classified management of pets brought into China by designated countries or regions and non-designated countries or regions. Pet owners shall fill in the *Registration Form for the Information on Pet Dogs and Cats Brought to China* at the ports and pets brought to China shall be subject to on-site quarantine at the ports of entry. One person can bring one pet to China at each entry. Please refer to *Announcement on Further Regulating the Quarantine Supervision of Pets Brought into China* (Announcement No. 5 [2019] of the General Administration of Customs) for detailed requirements.



II. Travelers' Declaration

(I) Entry Declaration

Inbound travelers carrying the following items must fill in the *Entering and Exiting Passengers' Declaration Form of Luggage of the PRC*, hand over these items to the customs for inspection and go through related entry formalities.

1. Animals, plants, animal and plant products, microbes, biological products, human tissue and blood products;
2. Personal items acquired overseas by residents in China that are worth RMB 5,000 or more;
3. Items that will be left in China by non-residents and are worth more than RMB 2,000;
4. More than 1,500 ml of alcoholic beverage (with alcohol content of over 12%), more than 400 cigarettes, more than 100 cigars or more than 500 g of cut tobacco;
5. More than RMB 20,000 in cash, or the equivalent of USD 5,000 of foreign currency in cash, or products containing more than 50 g of gold or silver;
6. Separately transported luggage, goods, product samples and advertising items;
7. Other items that need to be declared at the customs.

(II) Exit Declaration

Outbound travelers carrying the following items must fill in the *Entering and Exiting Passengers' Declaration Form of Luggage of the PRC*, hand over these items to the customs for inspection and go through related entry formalities.

1. Cultural relics, endangered animals and plants, products made from endangered animals and plants, biological species and precious metal;
2. Personal items worth more than RMB 5,000 that will be brought back by residents in China, including cameras, video cameras and laptops;

3. More than RMB 20,000 in cash, or the equivalent of USD 5,000 of foreign currency in cash, or products containing more than 50 g of gold or silver;

4. Goods, product samples and advertising items;

5. Other items that need to be declared at the customs.

(III) Declaration Procedure

The customs provides a declaration platform in the traveler check hall. Travelers may submit written declarations to the platform. After truthfully filling in the *Entering and Exiting Passengers' Declaration Form of Luggage of the PRC*, they can enter or exit China through the "declaration channel" (also known as the "red channel"). Travelers who do not need to make any declaration can go through the customs formalities through the "channel of non-declaration" (also known as the "green channel").

(IV) Customs Taxation

Items that are carried into or out of China by travelers, as well as those mailed into or out of China, are limited to reasonable quantities for personal use. Travelers will submit themselves to the supervision of the customs. Items for personal use may be used by travelers or presented to travelers' relatives and friends but must not be for sale or rent. What is a reasonable quantity will be determined by the customs according to the travelers' purposes of travel and the length of their stay. If the items carried or mailed by travelers for personal use exceed the reasonable quantity and travelers do not submit a declaration to the customs in accordance with the law, they will be ordered to pay the relevant tariffs.



(V) Ban on the Entry and Exit of Prohibited Items

If travelers bring prohibited items into or out of China, these items will be returned or destroyed under customs supervision. If the circumstances are serious, travelers will be subject to criminal prosecution. All prohibited items are listed in the *Form of the People's Republic of China on the Articles Prohibited from Entering or Exiting the Territory* and *Catalog of Animals and Plants, Animal and Plant Products and Other Quarantine Objects Prohibited from being Carried or Posted into the People's Republic of China*.

(VI) Special Groups

Travelers entering or exiting the country who hold diplomatic or courtesy visas conferred by the Chinese government, and other travelers who are exempt from customs examination, must proactively present their valid documentation to the customs. The customs will exempt them from examination.

Concerning foreign ambassadors to China, consulate staff, the staff of the United Nations, its specialized authorities and representative offices of international organizations in China, and their family members who are entering or exiting China: if personal daily items are within the specified quantity, these items will be exempt from taxation and customs examination.

Books, teaching items, and scientific research items carried by high-level foreign talent and overseas technology experts who are recognized by the Ministry of Human Resources and Social Security, Ministry of Education and their authorized departments will be exempt from import tax.

Long-term travelers (allowed to continuously stay in China for one year or longer) must go through formalities for items for personal use in accordance with the *Measures of the General Administration of Customs of the People's Republic of China for Supervision of the Entry and Exit of Articles for Personal Use of Long-term Non-resident Travelers*.

III. Entry of Special and Valuable Items

(I) Cultural Relics

Chinese laws and regulations prohibit the exit of valuable cultural relics and some other cultural relics. Specific implementation measures are available on the comprehensive administration platform of the National Cultural Heritage Administration (website: gl.ncha.gov.cn/home).

(II) Gold and Gold Products

The customs reminds travelers that China restricts the entry and exit of gold and gold products. Travelers entering and exiting the country who carry more than 50 g of gold or gold products shall submit a written declaration to the customs. If gold and gold products brought into or out of China exceed the reasonable quantity, they will be regarded as imported or exported items and subject to the declaration rules of imported or exported goods.

(III) Currency

RMB in cash: China adopts a quota system on the entry and exit of currency in cash. An individual can carry a maximum of RMB 20,000 in cash at each entry or exit.



Foreign currency in cash: Travelers exiting the country who carry foreign currency in cash equivalent to USD 5,000 to USD 10,000 must apply for a *Permit for Carrying Foreign Exchanges* from a designated foreign exchange bank. The customs will allow free passage to travelers carrying the appropriate permit sealed by a designated foreign exchange bank. In principle, travelers may not carry more than the equivalent of USD 10,000 of foreign currency in cash out of China. Inbound travelers who carry more than the equivalent of USD 5,000 of foreign currency in cash must submit a written declaration to the customs.

(IV) Special Items

Carriers, consignors or mailers of microbes, human tissue, biological products, blood, blood products and other special items taken out of China must submit a declaration to the customs and follow the health quarantine procedure. They must go through customs formalities with the *Application of Import/Export Special Articles for Verification of Health and Quarantine* issued by the customs. They may not enter or exit China without customs clearance.

IV. Departure Tax Refund

(I) Overview of Yantai's Procedure for Tax Refund on Departure

Where it is necessary for a foreigner to handle tax refund for the items he or she has purchased when leaving China, he or she shall voluntarily make a declaration to the customs and submit tax refundable items, an Application Form for Tax Refund for Purchases of Overseas Tourists Leaving China, the plain sales invoices of tax refundable items, and his or her valid identity certificate.

(II) Conditions for Tax Refund on Departure

Foreigners and domestic travelers from Hong Kong, Macao and Taiwan residing in China for no more than 183 days can receive tax refund if they have spent at least RMB



500 on tax refundable goods in the same tax-refund store within one day. The tax refundable goods must be unused and the time between the date of purchase and the departure date must be no more than 90 days. The goods should be carried onboard by the person or be checked-in when the person leaves China.

(III) Calculation Method

Refundable VAT is the invoice value of goods (including the VAT) multiplied by the refund rate (11% or 8%). The tax refund agency will charge a service fee of 2%. The actual refund is calculated by subtracting the service fee from the refundable VAT. The real refund rate is therefore 9% or 6%. A tax refund of RMB 10,000 or less will be paid in cash or by bank transfer, while any sum over RMB 10,000 will be paid by bank transfer.

Service department concerned: Yantai Customs

Tel: 0535-3061100 (office hours); 0535-3061114 (non-office hours)

Tips:

The stipulations and methods in this chapter are all available on the website of the General Administration of Customs (www.customs.gov.cn).

第四章 IV

应急救援

Chapter IV

Emergency Rescue



I. Police Emergency Number: 110

(I) Scope of Calling

Emergencies include criminal cases, cases endangering public security, mass incidents endangering property, personal safety or social order, public security disasters, and other illegal and criminal cases that need to be dealt with by public security organs;

(II) Scope of Help

The public security organ's emergency rescue can help in the case of drowning, falling, suicide, or other incidents that endanger personal safety; in cases where helpless residents need immediate assistance; in cases where the elderly, children, as well as people with mental health disabilities, people with mental disorders, and other people with poor behavioral and discriminating ability have gotten lost; in cases where people are in danger because of public utilities such as water, electricity, gas, and heat, which may endanger public security, property, and personal safety; in cases where people are in danger because of natural disasters such as earthquake, flood, and debris flow that endanger public security, personal or property safety, and the order of production and life; other urgent matters requiring the public security organ's involvement.

When the police answer your call, please tell them the time, place and details of the incident, along with your name and your exact position. After calling the police, make sure the police are able to contact you.



II. Fire Rescue

Fire rescue is provided in case of major disasters and accidents and other emergencies where saving human lives is prioritized.

1. Please dial 119 for help in case of fire and other disasters endangering property or personal safety.

2. Whoever discovers a fire disaster shall report it immediately. Any entity or individual shall, free of charge, report cases of fire, and no one shall obstruct the reporting of a fire.

When reporting a fire alarm to 119, please stay calm and clearly explain the situation in clear and concise language. Please clearly state the address and location of the accident, the type of the accident, whether there are people trapped, and any other relevant information. After reporting the fire alarm, make sure the emergency service can contact you.

III. Medical Emergency Number: 120

120 is a dedicated service hotline for emergency medical aid. Please call 120 immediately wherever and whenever there is an accident, a medical emergency, or any other critical situation.

Do the following three things when calling 120:

1. State the specific location, with the name of the district, city, town, village or subdistrict, preferably with a distinct landmark;
2. State the condition of the patient, including the main symptoms and their duration. In the case of multiple patients, state the number of patients and the on-site situation;
3. Leave an available phone number and make sure it is accessible.

IV. Road Accident Report Number: 122

In case of road accidents, please dial 122 to call the police.

In case of a vehicle fire, please call 119 to report it to the fire department, before calling 122.

If you are responsible for the accident, you need to report it to the insurance company of your vehicle.

After calling the police, keep your mobile phone accessible and wait for the police or rescuers.



Chapter V
Public Services

公共
服务

第五章
V



I. Communication Services

(I) Telephone

1. International Calls (China to foreign countries)

Generally, telephones in hotel rooms can be used to dial international numbers. Please refer to the hotel's instructions or consult the receptionist for dialing methods and fees. When you call people outside China through your personal devices, you need to dial the number 00 + the country code + the area code + the overseas number.

2. Use of Telephones

Please visit service booths of operators or consult related operators to apply for telephone cards, cancel services, settle bills and solve problems.

Tips:

Please bring your passport and other valid documentation when you visit a service booth to apply for telephone cards or cancel services. Operators have service booths or agent points in districts and cities of Yantai to offer relevant services. Please call a booth or visit the relevant website for more information.

3. Telephone Inquiries

Please dial 114 to inquire about telephone numbers of government agencies, enterprises and public institutions.

(II) Network

Hotels and restaurants generally provide Wi-Fi. Please refer to the hotel's instructions or consult the front desk. Please choose the appropriate package of Internet traffic for your personal mobile devices via the service platform of phone operators. For any questions concerning installation of Internet, please go to a business office of the network operator or consult the relevant operators.

Tips:

WeChat is also a commonly used instant communication tool. You can download and install WeChat

on your mobile phone, and then log in to the WeChat account to access multiple functional applications.

(III) Contact Information of Operators

China Mobile Tel: 10086 Website: www.10086.cn

China Telecom Tel: 10000 Website: www.189.cn

China Unicom Tel: 10010 Website: www.chinaunicom.com.cn

II. Banking Services

Services including opening accounts, making deposits, and transfer and remittances are available at the business offices of all banks.

(I) Opening an Account

Please apply by bringing your passport, visa and other valid identity documentation to the service window of the bank where you want to open an account.

(II) Information of Banks

Bank	Tel	Website
Bank of China	95566; 0535-6599965	www.boc.cn
Agricultural Bank of China	95599; 0535-6643841	www.abchina.com
Industrial and Commercial Bank of China	95588; 0535-6668627	www.icbc.com.cn
China Construction Bank	95533; 0535-6603319	www.ccb.com
Bank of Communications	95559; 0535-6677061	www.bankcomm.com
Postal Savings Bank of China	95580; 0535-6646307	www.psbc.com
China Merchants Bank	95555; 0535-6636038	www.cmbchina.com
China CITIC Bank	95558; 0535-6611510	www.citicbank.com
Hengfeng Bank	95395; 0535-2110800	www.hfbank.com.cn
Yantai Bank	400-831-1777; 6691363	www.yantaibank.net
Hana Bank (China) Co., Ltd.	400-885-1111; 6607618	www.hanabank.cn

Tips:

Please remember your password, it will be needed to make any deposits or withdrawals, either at a service window or an ATM.

If you need to exchange currencies, please visit the business offices of the Bank of China, Agricultural Bank of China, Industrial and Commercial Bank of China, China Construction Bank or Bank of Communications in Yantai.

III. Postal and Express Services

(I) Postal Service

All branch post offices can handle regular domestic mail, domestic registered mail, domestic parcels, and domestic express mail. Some branch post offices can handle international business. Postcards and stamps can be purchased at any post office.

Please visit the online post office (website: www.11185.cn), download "China Post" APP or call 11185 to inquire about mails, outlets, postal codes, and postage. Please follow the WeChat service accounts "China Post" and "China Post WeChat-Post Office" for reservations and ordering.

(II) Contact Numbers of Express Companies

EMS: 11183

SF Express: 95338

STO Express: 95543 YTO Express: 95554

Yunda Express: 95546 ZTO Express: 95311

JD Express: 950616 Deppon Express: 95353



IV. Residence

(I) Purchase of Commodity Houses

1. Get house information. The buyer should acquire information about the house, including the developer or builder of the house, the house condition and availability of the *Permit for Advance Sale of Commodity Houses* through the sales office of the developer, the official websites of the competent departments (zjj.yantai.gov.cn and www.ytfcjy.com/CMS/Main/Index), and the websites of intermediaries, and verify the house information at the sales office.

2. Conclude a house purchase agreement. If the buyer and the developer reach an agreement, they can handle contract conclusion and registration online and settle the house purchase payment as agreed.

3. Handle real estate registration. The buyer and the seller shall handle real estate registration and provide necessary materials for the purchased house according to the contract.

Precautions:

1. Pre-sale houses without the *Permit for Advance Sale of Commodity Houses* should not be purchased.

2. Overseas buyers and houses shall comply with the *Notice on Further Regulating the Administration on House Purchase by Overseas Institutions and Individuals* (No.186 [2010] of the Ministry of Housing and Urban-Rural Development). The developer should report the planned sale to the national security departments for approval of overseas-related matters before the house is purchased by an overseas institution, organization or individual (Tel: 0535-6631637).

3. The buyer shall make the payment directly into the presale funds supervision account.

(II) Purchase of Second-hand Houses

1. Get house information. You can find basic information and learn about the rights of house owners through the official websites of relevant departments, the websites of real estate agents and the information posted by individuals.

2. Conclude a house purchase agreement. If the buyer and the seller reach an agreement, they can sign the contract on the website of the local department of housing and urban-rural development and settle the house purchase payment as agreed.

3. Handle real estate registration. The buyer and the seller shall handle real estate registration and provide necessary materials for the purchased house according to the contract.

Precautions:

1. Do not buy second-hand houses without "Real Estate Registration Certificates".

2. Overseas buyers and houses shall comply with the Notice on Further Regulating the Administration on House Purchase by Overseas Institutions and Individuals (No.186 [2010] of the Ministry of Housing and Urban-Rural Development). The developer should report the planned sale to the national security departments for approval of overseas-related matters before the house is purchased by an overseas institution, organization or individual (Tel: 0535-6631637).





3. The buyer and the seller can settle the house purchase payment by themselves, or seek supervision for second-hand housing transaction from the local department of housing and urban-rural development.

(III) House Renting

1. Learn about housing information

You can find basic information and learn about the rights of house owners through the official websites of relevant departments, the websites of real estate agents and the information posted by individuals.

2. Sign a housing lease agreement

If the lessor and the lessee reach an agreement on a housing lease, they can sign the contract on the website of the housing lease management platform and settle the housing lease payment as agreed.

3. Register the housing lease agreement

The lessor and the lessee can provide required materials and register on the housing lease management platform or at the counter of the local department of housing and urban-rural development in accordance with the agreement.

Precautions:

1. Do not rent houses without "Real Estate Registration Certificates".

2. The lessor should report renting of the house to the national security departments for approval of overseas-related matters before renting the house to offshore institutions, organizations and individuals. Tel: 0535-6631637.

For matters mentioned in (I), (II), and (III):

Service department: Yantai Housing and Urban-Rural Construction Bureau

Tel: 0535-6918061

(IV) Real Estate Registration

The following materials are needed when a foreigner applies for the Real Estate Registration Certificate after buying the first commodity house:

1. The permit to purchase property issued by the National Security Bureau;

2. A copy and translation of the buyer's passport;



3. House purchase contract (including supplementary agreement) signed with the developer;
4. Purchase invoice and deed tax documents;
5. Statement of commitment to use the house for self-residence;
6. Copies of the developer's Power of Attorney and the agent's identification;
7. Certificate of working and living in Yantai for one year.

The materials required by various districts and cities vary slightly. For specific services, please dial the following telephone numbers for consultation:

List of Contact Numbers of Service Centers in Yantai

Name	Tel
Zhifu District Real Estate Registration Center	0535-2909555
Laishan District Real Estate Registration Center	0535-6892397
Fushan District Real Estate Registration Center	0535-3029611
Muping District Real Estate Registration Center	0535-4219772
Penglai District Real Estate Registration Center	0535-3356671
Haiyang Real Estate Registration Center	0535-3301502
Laiyang Real Estate Registration Center	0535-7299035
Qixia Real Estate Registration Center	0535-5267368
Longkou Real Estate Registration Center	0535-8500930
Zhaoyuan Real Estate Registration Center	0535-8115082
Laizhou Real Estate Registration Center	0535-2809557
Huang-Bohai New Area Real Estate Registration Center	0535-6119526
Hi-tech Zone Real Estate Registration Center	0535-6922577
Changdao Pilot Zone Real Estate Registration Center	0535-3215023

Tips:

For accommodation registration management, please refer to the section of "Security Administration" on page 65-66 of the *Guide*.

V. Transportation

(I) Bus

Ticket fare: The unified fare is RMB 1 in all districts and cities of Yantai. Residents over the age of 60 can take the bus free of charge with their valid identity documents.

There is a cash box on each bus. Please put the fare into the box (no change can be provided). You can also pay by using an IC card or your mobile phone APP, WeChat, and Alipay by scanning the QR code.

To inquire about bus routes, please use the "Yantai Bus" APP or call 0535-2917999 of the Yantai Public Transportation Group or follow the official WeChat account: Yantai Bus Timetable.

(II) Taxi

Taxis in legal operation now include cruising taxis and online ride-hailing services.

1. Cruising taxis

The taxi fare consists of a base fare and a fare calculated by distance. For trips within three kilometers, only the base fare will be charged. For trips more than three kilometers, a fee calculated by distance will be added on top of the base fare;

Between the hours of 22:00 and 05:00 a higher fare applies;

Ride-hailing:

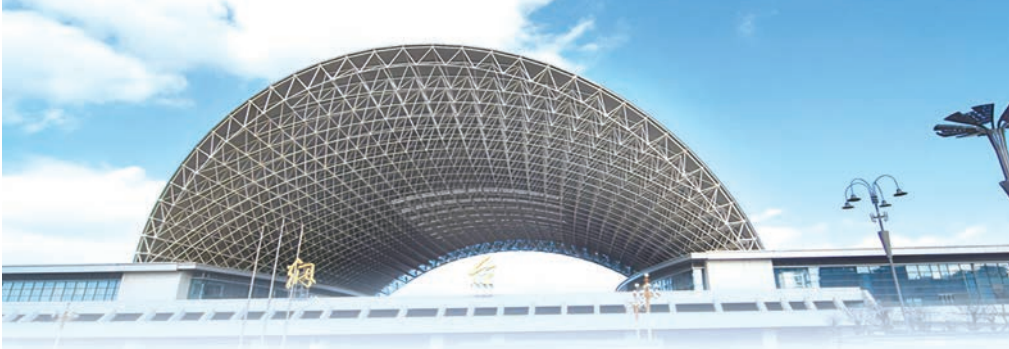
(1) You can hail a taxi on the roadside or use the taxi waiting stations available at railway stations, airports, and some roads. You can also dial 95128 for cruising taxi services;

(2) For your safety, the left rear door (driver's side) of a taxi cannot be opened from the inside;

(3) All taxis downtown have a bilingual broadcast service in Chinese and English;

(4) Please take legal cruising taxis with the taxi company name written on their roof sign.





2. Online ride-hailing services

You can download an online ride-hailing APP for reservations. The taxi fare is market-based, and the estimated fare is displayed on the APP when you take a taxi.

(III) Railway

There are two railway stations in downtown Yantai: Yantai Station and Yantai South Station. There are also railway stations in districts and cities along the railway lines.

Ticket purchasing methods:

1. After completing the registration of passport information on the official 12306 website or mobile APP, you can buy train tickets online.

2. Buy tickets with your own valid identity documents at a ticket window of a railway station or on a ticket vending machine.

Tips:

There is no need to collect paper tickets, and you can check in at the station directly with the identity document used to purchase the ticket. Passengers who need to be reimbursed can print the reimbursement receipt at any ticket window or ticket vending machine at any station in the country.

Railway service hotline: 12306

You may scan the following QR codes to purchase tickets and view ticket information, train times and the address of ticket agencies:



Railway 12306



China Railway's official
WeChat account



12306 official
WeChat account

(IV) Port

Yantai Port is an important RORO passenger transport hub in China. The national Class One open port is mainly engaged in domestic RORO passenger transport, Yantai-South Korea international passenger liners, as well as cruises and yachts.

Ticket purchasing methods:

1. Buy tickets with your own passport at a ticket window of the port station or a ticket agency;
2. Follow the official WeChat account "Yantai Port Passenger Transport" for schedule and fare or call port service hotline 0535-6506666.

Other passenger port information

Port Name	Address	Tel
Yantai Port Passenger Transport Station	No. 2, Huanhai Road, Zhifu District	0535-6506666
China Railway Bohai Railway Ferry Yantai North Station	No. 86, Huanhai Road, Zhifu District	0535-2932000
Yantai Tongsan Ro-Ro Terminals	No. 188, Gangwan Avenue, Zhiyu District	0535-6741688
Yantai Salvage Bureau Passenger Transport Station	No. 100, Zhifu Island East Road, Zhifu District	0535-6596777
Passenger Terminals of Longkou Port	No.1565, Huanhai Middle Road, Longkou	0535-8810977
Penglai Port New Passenger Transport Station	North Head of Shanghai Road, Penglai District	0535-6509077
Pengchang Passenger Terminal	No. 11, Haigang Road, Penglai District	0535-5642551

Tips:

As sea shipping is greatly affected by the weather, please pay attention to the change of liners.

Yantai Port resumed its passenger flight on August 13, 2023. At present, there are two routes: "Yantai to Incheon" and "Yantai to Pyeongtaek", with three round trips each week.





(V) Aviation

Yantai Penglai International Airport, a national Class-One airport, has direct flights to over 50 domestic and international cities. It is located about 55 kilometers from downtown Yantai, which takes roughly one hour by car.

It currently operates an international route from "Yantai to Incheon". Please check the specific flight at the airport.

Airport service hotline: 0535-6299999

Website: www.ytairport.com.cn

Tips:

Airport buses are available in some districts and cities. To inquire about bus routes and departure times or to purchase tickets, please follow the official WeChat account "Airport Buses of Yantai Transport" or call the airport bus service hotline: 0535-5139146.

VI. Education

In Yantai, there are a total of 1,576 schools at various levels, including 16 colleges and universities, 958 kindergartens, 288 primary schools, 230 junior high schools, 46 general senior high schools, 29 secondary vocational schools, and 9 special education schools.

According to the current regulations, compulsory education includes five years of primary school education and four years of junior high school education. Senior high school education includes three years of schooling. One school year is divided into two semesters of about 20 weeks each. Generally, the first semester starts in early September and lasts until January of the next year. The second semester runs from February to July. Each winter or summer vacation lasts about 12 weeks for compulsory education and about 10 weeks for senior high schools.

School-age children of foreigners who reside in Yantai may apply for residence permits for study in accordance with the *Administrative Measures for the Enrollment and Cultivation of International Students by Schools in Shandong* (LJNZ [2021] No. 4). They can be enrolled in a local school in the place where they reside, or in an international school. The original passport should be presented at enrollment.

Currently, there are two international schools in Yantai, Korean School in Yantai and Yantai Huasheng International School. Located in Laishan District, the Korean School in Yantai is a school that offers primary, junior, and senior high school education to South Korean students. The school teaches the Korean curriculum and is the only school in Yantai that issues academic certificates accredited by the South Korean government. Located in the Huang-Bohai New Area, Yantai Huasheng International School is a K12 school providing an American curriculum. It is



Yantai's first English language international school licensed by the Shandong Provincial Government.

Service department: Yantai Education Bureau

Tel for consultation on international schools: 0535-2101885

Tel for consultation on general primary and secondary schools: 0535-2101868; 2101885

Website: yj.yantai.gov.cn

Official WeChat account: Yantai Education Release

VII. Healthcare

Yantai Municipal Health Commission mainly implements all the national principles and policies on health work. Its Medical Administration Department is mainly responsible for the supervision and management of medical institutions and medical services in the whole city.

Service department: Yantai Municipal Health Commission

Tel: 0535-6247776

Website: wjw.yantai.gov.cn

Information of Hospitals

Name	Address	Tel	Note
Yantai Yuhuangding Hospital	No. 20, Yudong Road, Zhifu District	0535-6691999	Tel for International Outpatient Service: 0535-6027262; 0535-6691999 ext. 82262
Yantai Hill Hospital/ Yantai MCH Hospital	No. 10087, Keji Avenue, Laishan District	0535-6863129	Tel for International Outpatient Service: 0535-6863129
Yantai Affiliated Hospital of Binzhou Medical University	No. 717, Jinbu Street, Muping District	0535-2123456	Tel for International Outpatient Service: 0535-2123456
Yantai Stomatological Hospital	No. 19, Beima Road, Zhifu District	0535-6228080	Tel for International Outpatient Service: 0535-6228800
Yantai Qishan Hospital	No. 62, Huanshan Road, Zhifu District	0535-6606100	
Yantai Traditional Chinese Medicine Hospital	No. 39, Xingfu Road, Zhifu District	0535-6597018	
Central Hospital of Laiyang, Yantai	No. 111, Changshan Road, Laiyang	0535-7232120	

Information of Hospitals

Name	Address	Tel	Note
Yantai Psychological Rehabilitation Hospital	No. 169, Jingqi East Road, Laiyang	0535-7288700	
Yantai Zhifu Hospital	No. 51, Qingnian Road, Zhifu District	0535-6240167	
Yeda Hospital	No. 23-1, Huanghe Road, Huang-Bohai New Area	0535-6101504	
Yantai Hospital of Shandong Wendeng Orthopaedics & Traumatology	Middle Section of Lusida Road, Laishan District	0535-6911697	
Fushan District People's Hospital, Yantai	No. 111, Gangcheng West Street, Fushan District	0535-6319568	
Penglai City People's Hospital	No. 89, Xianhou Road, Penglai District	0535-5642036	
Haiyang People's Hospital	No. 73, Haiyang Road, Haiyang	0535-3222443	
Qixia People's Hospital	No. 259, Minsheng Road, Qixia	0535-3376637	
Longkou People's Hospital	No. 1366, Huancheng North Road, Longkou	0535-8776809	
Yingcheng Hospital	No. 568, Hedong Road, Zhaoyuan	0535-8097999	
Laizhou People's Hospital	No. 1718, Wuli Street, Laizhou	0535-2276319	
Laizhou Hospital of Traditional Chinese Medicine	No. 832, Wenhua East Road, Laizhou	0535-2212368	
People's Hospital of Changdao Marine Ecological Civilization Comprehensive Pilot Zone	No. 18, Leyuan Avenue, Changdao Marine Ecological Civilization Comprehensive Pilot Zone	0535-3212054	

Tips:

Foreigners are offered vaccinations by the medical service institution in the community where they live under the technical guidance of the Yantai Center for Disease Control and Prevention.

Tel: 0535-6700259.

Contact Information of the Centers for Disease Control and Prevention in Various Districts and Cities in Yantai

District/City	Tel
Zhifu District	0535-6636982
Fushan District	0535-2955820
Laishan District	0535-6711993
Muping District	0535-4226036
Penglai District	0535-5606127
Haiyang	0535-2723875
Laiyang	0535-3367017
Qixia	0535-3376003
Longkou	0535-8544742
Zhaoyuan	0535-8218731
Laizhou	0535-2211391
Huang-Bohai New Area	0535-6937357
Hi-tech Zone	0535-6925272
Changdao Marine Ecological Civilization Comprehensive Pilot Zone	0535-3091017
Yantai	0535-6700926



VIII. Marriage Registration

Marriage registration between a foreigner and a Chinese resident with a permanent household register in Yantai shall be handled by the marriage registry of the county-level civil affairs department in the place where the Chinese resident has registered his or her permanent household.

(I) Marriage Registration

Application conditions:

1. A Chinese resident has registered his or her permanent household under the jurisdiction of Yantai;
2. The man and woman concerned shall marry of their own free will and apply together at a marriage registry;
3. The man shall have reached the age of 22 and the woman shall have reached the age of 20;
4. Neither party has a spouse;
5. The parties have no direct blood relationship or collateral blood relationship within three generations;
6. Both parties have full capacity for civil conduct;

Documents required:

1. Submit three recent 2-inch half-length bareheaded photos of the couple together;
2. Chinese residents: permanent household register and resident identity card;





3. Foreigners: passport or other valid international travel documents; a no spouse certificate issued by a notary office or authority of your own country and certified by an embassy (consulate) of the People's Republic of China in that country or certified by an embassy (consulate) of that country in China, or a no spouse certificate issued by an embassy (consulate) of the country in China.

(II) Divorce Registration

Application conditions:

1. A Chinese resident has registered his or her permanent household under the jurisdiction of Yantai;
2. A couple who request a divorce apply together at a marriage registry;
3. Both parties have full capacity for civil conduct;

Documents required:

1. Marriage certificates and a divorce agreement signed by both parties;
2. Each party should submit two recent 2-inch half-length bareheaded photos of themselves;
3. Chinese residents: permanent household register and resident identity card;
4. Foreigners: passport or other valid international travel documents.

List of Information of Marriage Registration Organs in Yantai

Name	Address	Tel
Zhifu District Marriage Registry	No. 169-6, Jichang Road, Zhifu District	0535-6276370
Fushan District Marriage Registry	No.1021, Yongda Street, Fushan District	0535-6325409
Laishan District Marriage Registry	No. 101, Haitang Road, Laishan District	0535-6716016
Muping District Marriage Registry	No. 368, Zhengyang Road, Muping District	0535-3397651
Penglai District Marriage Registry	3F, Yinghai Building, No. 17, Chuangfa East Road, Penglai Economic Development Zone	0535-5667683
Haiyang Marriage Registry	3F, Haifa Building, No. 21, Nanjing Street, Haiyang Economic Development Zone	0535-3261222
Laiyang Marriage Registry	No. 258, Changshan Road, Laiyang	0535-7227654
Qixia Marriage Registry	No. 298, Fengxiang Road, Qixia	0535-5223750
Longkou Marriage Registry	No. 572, Gangcheng Avenue, Longkou	0535-8519103
Zhaoyuan Marriage Registry	No. 111, Wenquan Road, Zhaoyuan	0535-8157755
Laizhou Marriage Registry	No. 598, Weimin Street, Laizhou	0535-2233027
Huang-Bohai New Area Marriage Registration and Management Service Center	2F, Block B, No. 83, Jinshajiang Road, Huang-Bohai New Area	0535-6113159
Changdao Marine Ecological Civilization Comprehensive Pilot Zone Social Services Center	No. 102, Xianfu Street, Changdao Marine Ecological Civilization Comprehensive Pilot Zone	0535-3210160

IX. Adoption and Assistance

(I) Adoption

The registration service for adoption by foreigners shall be handled by Yantai Civil Affairs Bureau.

Service department: Child Welfare Division of Yantai Civil Affairs Bureau

Tel: 0535-6788228

The adopter shall provide the following documents:

1. The Notice of Traveling to China for Adoption issued by the China Center for Children's Welfare and Adoption;
2. Identity documents and one 2-inch single person photo of the adopter;
3. Two recent 2-inch half-length bareheaded photos of the adopter and the adoptee.

Application conditions:

1. The adoptee has registered his or her permanent household under the jurisdiction of Yantai;
2. Registration shall be made jointly by the adopter, the citizen or institution entitled to place out children for adoption, and the adoptee with Yantai Civil Affairs Bureau.

(II) Assistance

If a person seeking help is suspected to be from abroad, an assistance administration agency shall report to a public security organ for confirmation of the identity of the person. Those who enter or reside illegally shall be handed over to a public security organ; As for those who enter or reside legally, the local foreign affairs department shall be notified and may entrust the notifier to provide temporary assistance.

Service department: Assistance Administration Division,
Yantai Social Assistance Comprehensive Service Center

Tel: 0535-6675209; 0535-6682129, 6082129
(Assistance Hall)



X. Funeral

(I) Cremation

With his or her own identification certificate as well as the deceased's death certificate and other valid identification documents including the passport, the undertaker shall contact a local funeral service institution in Yantai.

List of Funeral Service Institutions in Yantai

Name	24-hour service telephone	Address
Zhifu District Funeral Parlour	0535-6012222	No. 110, Jichang Road, Zhifu District
Fushan District Funeral Parlour	0535-3463444	No. 99, Yingshan Road, Fushan District
Muping District Funeral Parlour	0535-4722038	120 meters east of Gaojin Road, Muping District
Penglai District Funeral Parlour	0535-5642875	No. 294, Zhonglou South Road, Penglai District
Haiyang Funeral Parlour	0535-3268898	South of Jiangjiatuan, Dongcun Sub-district Office, Haiyang
Laiyang Funeral Parlour	0535-7332879	Middle Section of Jingxu Road, Laiyang
Qixia Funeral Parlour	0535-5266202	No. 318, Zhenxing Road, Qixia
Longkou Funeral Administration	0535-8526914	Buziling, Donglai Sub-district, Longkou
Zhaoyuan Funeral Parlour	0535-8119518	Diao'er'ai Village, Luofeng Sub-district, Zhaoyuan
Laizhou Funeral Administration	0535-2211544	Donglangzibu Village, Chenggang Road Sub-district, Laizhou

(II) Exit of Cremains

There is no need to declare.

(III) International Transport of Corpse

Documents required: passport, death certificate, certificate from the embassy of the country of the deceased in China (for exit customs declaration), and recipient information (in English).

Service department: Fushan District Funeral Parlour, Yantai (the only service provider undertaking international transport of corpses in Yantai)

Tel: 0535-3463444



第六章

VI

休闲娱乐

Chapter VI

Leisure and Entertainment

I. Diet

Yantai is the birthplace of Shandong cuisine, the first of China's eight major cuisines. Here you can enjoy authentic Shandong cuisine at either a fine hotel or a street stall.

Yantai's cuisine mainly consists of seafood, thanks to its 1,000-kilometer coastline, which is rich in various kinds of seafood. Yantai cuisine features fresh, crisp, tender, and original flavors, with deep-frying, stir-frying, frying, steaming, and stewing being the main cooking methods. The famous local cuisine includes deep-fried oysters, shredded fish with sweet and sour sauce, fried swan eggs, fried sea intestinal with leek, steamed sea crab, steamed snapper, braised abalone with shell, braised sea cucumber with scallion, sea cucumber rice, sea intestinal rice, braised prawns, braised seafood, and fried octopus with hot spicy sauce. Besides seafood dishes, unique local pastry and snacks, such as Fushan big noodles, Penglai small noodles, boiled dumplings stuffed with pork, shrimp and crab meat or mackerel, "one-thousand-layer" cake, and fried leek dumplings, are also widely known.

In addition to Jiaodong Shandong cuisine and various snacks, there are other Chinese cuisines and international fast-food chains including McDonald's, KFC, Pizza Hut, and Starbucks, and Japanese and Korean cuisines can be found in streets, alleys and shopping malls.

Tips:

Some dishes are cooked with condiments, such as onions, ginger, garlic, coriander, sesame sauce, and peanut butter. Please specify if you have dietary restrictions or are allergic to these ingredients when ordering.

For detailed food information, please visit the Yantai Culture and Tourism Bureau website www.ytta.cn or follow the official WeChat account "Yantai Culture and Tourism".





II. Culture and Entertainment

You can experience a variety of cultural and recreational activities in Yantai. Yantai Museum, Yantai City Cultural Center, and Yantai Grand Theatre in the downtown stage Yantai history exhibitions, Chinese and foreign cultural art exhibitions, and a wide variety of performances every year. Yantai Art Museum, Yantai Planning Exhibition Hall, Yantai International Expo Center, and other venues all display paintings and calligraphy, information on Yantai's urban layout, and a variety of large exhibitions and agricultural science and technology achievements. Yantai Art Center is a municipal professional art academy. In addition, various districts and cities have their own performance groups.

Major festival activities such as the Yantai Fest and Yantai Citizens Cultural Festival are also held in Yantai, along with other exciting and colorful festivals.

Chaoyang Street and Suochengli in Zhifu District, Shandong Handmade Products Yantai Comprehensive Exhibition Center, Yantai Binhai Square Pedestrian Street, Haichang Fisherman's Wharf, Shangkuang West Road Food Street, as well as cinemas, KTVs, and bars all around the city provide a vibrant nightlife.

For detailed culture and entertainment information, please visit the "Yantai Culture and Tourism Cloud" website or WeChat mini program or follow the official WeChat account "Yantai Culture and Tourism".



III. Tourism

Yantai is the best summer tourism leisure city in China, and has earned the title "Picturesque Yantai, Wonderland on the Coast". It has 81 A-level scenic spots such as Yantai Mountain, Penglai Pavilion, Penglai Polar Ocean World, Changyu Wine Culture Museum, Yantai Yangma Island, and Mou's Mansion. It has many tourism projects including rural tourism, industrial tourism, folk tourism, farm tourism, fishing tourism, as well as hot spring and skiing. Nearly 100 travel agencies all over Yantai launch urban boutique tourism routes such as one- and two-day tours, as well as special line tours for tourists.

For detailed travel information, please visit the "Yantai Culture and Tourism Cloud" website or WeChat mini program or follow the official WeChat account "Yantai Culture and Tourism".

Tips:

Foreigners residing in Yantai for a long term can apply for a "Resident Recreation Passport" through the "Yantai Culture and Tourism Cloud" WeChat mini program. This passport grants access to various preferential policies and related services offered by tourism enterprises. For inquiries, please contact 0535-6636283.



QR code of Yantai Culture and Tourism Cloud



QR code of official WeChat account of Yantai Culture and Tourism



IV. Hotels

Yantai's hotels mainly include high-end hotels, cultural theme hotels, and budget hotels. Yantai has 54 starred hotels (including seven five-star hotels, 19 four-star hotels, and 28 three-star hotels) and three cultural theme hotels, which will also provide Food and Beverages (F&B), entertainment, sports facilities, as well as conference facilities, in addition to accommodation services. Budget hotels generally provide accommodation services only, and some also provide simple F&B services.

For detailed hotel information, please visit the Yantai Culture and Tourism Bureau website www.ytta.cn or follow the official WeChat account "Yantai Culture and Tourism".

V. Shopping

Yantai has domestic well-known shopping malls such as Yantai Zhenhua, Wanda Plaza, Joy City, Mixc One, and Ginza, and transnational retail chain groups such as AEON, New World Department Store, and METRO. Eastern Culture Market, Yantai Sanzhan Wholesale Market, Jiutian Wholesale Market of International Aquatic Products, and Yantai Fruit Wholesale Market are also worth a visit.

Yantai's famous cherries, which are ripe in April or May, as well as apples and Laiyang pears, which are ripe in September or October, are well known at home and abroad and are well-suited as gifts for friends and relatives.

VI. Sports

Yantai is famous for being the "home of athletics", "home of martial arts", and "home of basketball" and has a long history and activates many in the city. Yantai leads Shandong Province in mass sports, competitive sports, and the sports industry. Yantai athletes have made great achievements in domestic and foreign competitions, winning a total of 93 world championships to date.

They won a total of eight gold medals, five silver medals, and three bronze medals in the previous Olympic Games, earning Yantai first place in terms of the total number of gold medals in Shandong.

Yantai has rich sports and leisure resources. There are more than 10 large parks and squares in the city center, such as Sports Park (including Center Stadium, Swimming Hall, Shooting Center, and Yantai Stadium), Yantai Nanshan Park, Yantaishan Park, Zhifu Stadium, Binhai Square, and Bathing Beach. Small and diverse fitness venues can be found all over urban communities. Wherever you are in the city, it takes no more than 15 minutes to reach one of these fitness venues. Yantai also boasts golf courses such as Penglai Junding, Longkou Danling, Longkou Foguang, and Longkou Nanshan International Golf Clubs. The city is home to five ski resorts, namely Haiyang Linshan Ski Resort, Zhaoyuan Luoshan Ski Resort, Tashan Ski Resort in Zhifu District, Nanli Ski Park in Zhifu District, and Bolang Ski Resort in Zhifu District, as well as two ice and snow centers, namely Fushan Ice Sports Center and Century Star Skating Rink in Huang-Bohai New Area. It has three mountain (car) outdoor camps, namely Haiyang Botao RV Camp, Zhaoyuan Huangjinhai Self-Help Travel Camp, and Muping Haduihou Outdoor Camp. Additionally, it has eight sea fishing bases, including Qingquan Marine Leisure Sports Base, Laizhou Mingbo Aquatic Co., Ltd., Changdao Hongxiang Marine Ranch, Pipakou Sea Area Fuhan National Marine Ranch Demonstration Zone, Dongyu National Marine Ranch Demonstration Zone, Jiayi National Marine Ranch Demonstration Zone, and Muping Northern Sea Area National Marine Ranch Demonstration Zone. Furthermore, the city has built a 60-kilometer coastal footpath starting from Yangma Island in the east and ending at Bajiao Bay in the west, a 43.5-kilometer fitness footpath around Menlou Reservoir, and a mountain-sea leisure footpath loop with a total length of about 20 kilometers around Daiwang Mountain.

For more information, please visit the official website of Yantai Sports Bureau: tyj.yantai.gov.cn.



VII. Religious Activities

(I) Regulations on Religious Activities of Foreigners

The People's Republic of China respects the freedom of religious belief of foreigners in China, protects and administers their religious activities in China in accordance with laws, and protects their friendly communication as well as cultural and academic exchanges in religion with religious circles in China according to the law. Meanwhile, foreigners in China who hold religious activities shall abide by the "Regulations on Religious Affairs", "Regulations on Religious Affairs of Shandong Province", "Regulations on the Management of Religious Activities of Foreigners in the People's Republic of China" and "Detailed Rules for the Implementation of the Regulations on the Management of Religious Activities of Foreigners in the People's Republic of China", and other laws, regulations and rules.



(II) Legal Venues for Religious Activities

In Yantai, religions such as Buddhism, Taoism, Islam, Catholicism, Christianity, and smaller folk religions are all present. Among them, venues within the urban area that are convenient for foreigners to participate in religious activities are:

Religious Venues		Address
Buddhism	Zhenshan GuanYin Temple	No. 67 Zhenshan Road, Zhifu District
	Helu Temple	No. 1 Tonghui Road, Fushan District
Taoism	Shenqing Daoist Temple	Forest Farm in Kunyu Mountain Nature Reserve
	Yangzhu Temple	Sunny Slope of Zhifu Island, Zhifu District
Islam	Mosque	No. 1 Jiefang Road, Zhifu District
Catholicism	Dama Road Catholic Church	No. 35 Dama Road, Zhifu District
Christianism	Shengli Road Church	No. 134 Shengli Road, Zhifu District
	Qishan Church	No. 121 Nanshan Road, Zhifu District
	Shixiutang	No. 11 Shixing Road, Zhifu District

VIII. Holidays

(I) Major Traditional Festivals in China

The Spring Festival (1st day of the 1st lunar month); the Lantern Festival (15th day of the 1st lunar month); Tomb-Sweeping Day (15 days after the vernal equinox); Dragon Boat Festival (5th day of the 5th lunar month); Qixi Festival (7th day of the 7th lunar month); Mid-Autumn Festival (15th day of the 8th lunar month); Double Ninth Festival (9th day of the 9th lunar month); Laba Festival (8th day of the 12th lunar month); New Year's Eve (the last day of the 12th lunar month).



(II) China's Statutory Holidays

New Year's Day (January 1); Spring Festival (the 1st to 3rd of the 1st lunar month); Tomb-Sweeping Day (15 days after the vernal equinox); Labour Day (May 1); Dragon Boat Festival (5th day of the 5th lunar month); Mid-Autumn Festival (15th day of the 8th lunar month); National Day (October 1–October 3).

(III) Yantai Folk Festivals

1. Yantai Yuhuangding Temple Fair (venue: Yuhuangding Park): Legend has it that the ninth day of the first lunar month is the birthday of the Jade Emperor. On this day people will stream into the Yuhuangding Park to pray for the Jade Emperor's blessings. Peking Opera performances, Yangko (a popular rural folk dance), folk handicrafts, and local snacks, available from the fifth day to the 10th day of the first lunar month, give visitors an unforgettable experience.

2. Haiyang Yangko Festival (venue: Haiyang): According to local customs, people worship the Crop God on the 11th day of the first lunar month. During this festival, people will perform Yangko dances until about

the 15th day of the same month. The 13th day of the month marks the Sea Dragon King's birthday in Jiaodong folk customs. To commemorate this special day, coastal fishermen in Haiyang will organize various sea sacrificial activities by performing unique Yangko dances, praying for good weather and a bumper harvest, as well as safety, happiness, and good luck.

3. Laizhou Chinese Rose Festival (venue: Laizhou Chinese Rose Garden): A series of flower viewing and entertainment activities are held on May 25 every year.

4. Fishing Light Festival (venue: Huang-Bohai New Area): On the afternoon of the 13th and 14th day of the first lunar month, coastal fishermen set off from their homes, carrying sacrifices, holding high colorful flags, and setting off firecrackers all the way. First, they go to the Dragon King Temple or the Temple of the Sea Goddess to send lights and worship the gods, then to the fishing boats to worship the boats and the sea, and finally to the seaside to put lit candles into the sea.

5. Laiyang Pear Blossom Festival (venue: Laiyang): In mid-April every year, the pear blossoms look like delicate white snow and misty smoke. Strolling among the pear blossoms and wandering under the pear trees make people seem to float in the air.



第七章 VII

政策 法规

Chapter VII

Policies and Regulations





I. Taxation and Tax Exemption

(I) Tax Categories

By the current laws of China, the following tax categories are applicable to foreigners and are collected and administered by the tax authorities: VAT, consumption tax, business income tax, individual income tax, vehicle purchase tax, city and town land use tax, land value-added tax, house property tax, resource tax, vehicle and vessel tax, stamp tax, deed tax, environmental protection tax, farming land occupation tax, urban maintenance and construction tax, as well as education surcharge and local education supplementary tax.

(II) Consumption Tax

China's consumption tax is included in the calculated prices, that is, commodity prices include the consumption tax.

(III) Individual Income Tax

1. Tax Liability

According to the law, foreigners who have resided in China for 183 days or more within the same tax year shall pay individual income tax on their income from both inside and outside China;

Foreigners who have resided in China for less than 183 days within the same tax year shall pay individual income tax on their income received from China.

2. Taxable Income

Foreigners who obtain the following income within China shall declare and pay individual income tax:

- (1) Wages and salaries;
- (2) Remuneration for services;
- (3) Author's remuneration;
- (4) Royalties;
- (5) Business income;
- (6) Interests, dividends and bonuses;
- (7) Lease of property;
- (8) Transfer of property;
- (9) Incidental income.

3. Tax Incentives

The following incomes shall be temporarily exempt from individual income tax:

(1) Housing subsidies, food subsidies, relocation payment, and laundry fee obtained by foreign individuals in the form of non-cash or reimbursement;

(2) Travel allowance at home and abroad obtained by foreign individuals according to reasonable standards;

(3) The fees for visiting relatives, language training, children's education, etc., obtained by foreign individuals, which have been examined and approved as reasonable by the local tax authorities;

(4) Dividends and bonuses earned by foreign individuals from foreign-invested enterprises;

(5) Wages and salaries earned by foreign experts who meet one of the following conditions are exempt from personal income tax:

① Foreign experts sent directly to China by the World Bank according to its Special Loan Agreement;

② Experts sent directly to China by the United Nations Organization;

③ Experts working in China for UN aid projects;

④ Experts sent by the donor country to China to work for its unpaid aid projects;

⑤ Cultural and educational experts who have worked in China for less than two years under the cultural exchange programs signed by the governments of the two countries and whose wages and salaries are paid by their own countries;

⑥ Cultural and educational experts who have worked in China for less than two years under the international exchange programs of Chinese colleges and universities and whose wages and salaries are paid by their own countries;

⑦ Experts who come to China through non-governmental scientific research agreements and whose wages and salaries are paid by the government of their own countries.

Before December 31, 2027, foreigners who meet the conditions of individual residents can choose to enjoy the special additional deduction of individual income tax, or to enjoy the tax exemption preferential policies of housing subsidy, language training fee, children's education fee, or other subsidies according to law, but not at the same time. Once a foreigner makes a choice, he/she may not change that decision within the tax year.

(IV) Vehicle Purchase Tax

The purchase of automobiles and other vehicles in China shall be subject to vehicle purchase tax.

Experts settled long-term in China may import one car for personal use and are exempt from vehicle purchase tax. Experts who reside permanently in China shall provide an Expert Certificate or Class A and Class B Foreigners' Work Permit issued by the State Administration of Foreign Experts Affairs or its authorized organizations when importing cars for personal use.

For other types of taxes and personal income tax calculation and declaration, please consult the tax service hotline of Shandong Provincial Tax Service, State Taxation Administration: 12366.





II. Social Insurance Payment

The specific process for foreigners to obtain endowment insurance, unemployment insurance and employment injury insurance is as follows: The employer will first go to the Yantai Administrative Approval Service Bureau to apply for the *Foreigners' Work Permit*, and then hold the *Form of Increased/Decreased Social Insurance by Employers*, passport copies and *Foreigners' Work Permit* to go through registration formalities in the social insurance institutions within 30 days from the commencement of employment. The employer will then pay the social insurance premiums monthly.

Foreigners from countries that have signed a bilateral or multilateral social insurance exemption agreement (hereinafter referred to as "the agreement") with China will be exempt from the obligation to pay the costs stipulated in the agreement relating to endowment insurance, unemployment insurance and employment injury insurance if they provide the insurance payment documentation issued by their home country. If foreigners stop working or change their work in China, the formalities of employment registration cancellation and alteration and social insurance reduction should be handled in accordance with relevant regulations. Those who are leaving China can apply to withdraw the pension from their individual endowment insurance account. Those who are paying endowment insurance, unemployment insurance and employment injury insurance can enjoy the corresponding social insurance benefits.

Social Insurance Institutions in Yantai

Name	Tel
Yantai Social Insurance Service Center	0535-6632171
Zhifu District Social Insurance Service Center	0535-6232357
Fushan District Social Insurance Service Center	0535-6332072
Laishan District Social Insurance Service Center	0535-6710206
Muping District Social Insurance Service Center	0535-4313372
Penglai District Social Insurance Service Center	0535-5617107
Haiyang Social Insurance Service Center	0535-3222551
Laiyang Social Insurance Service Center	0535-3363971
Qixia Social Insurance Service Center	0535-5212805
Longkou Social Insurance Service Center	0535-8512828
Zhaoyuan Social Insurance Service Center	0535-8111701
Laizhou Social Insurance Service Center	0535-2235568
Huang-Bohai New Area Social Insurance Service Center	0535-7812333
Hi-tech Zone Insurance Service Center	0535-6922134
Changdao Pilot Zone Social Insurance Service Center	0535-3212351

III. Medical Insurance Payment

The specific process for foreigners to obtain medical insurance is as follows: The employer will first go to the Yantai Administrative Approval Service Bureau to apply for the *Foreigners' Work Permit*, and then hold the *Form of Increased/Reduced Social Insurance by Employers*, passport copies, and *Foreigners' Work Permit* to go through registration formalities in the medical insurance agency within 30 days from the commencement of employment. This can also be done through the official website "Yantai Healthcare Security Administration". The employer will then pay the medical insurance monthly. If foreigners stop working or change their work in China, the formalities of employment registration cancellation and alteration and medical insurance reduction should be handled in accordance with relevant regulations.

Social Insurance Institutions in Yantai

Name	Tel
Yantai Medical Insurance Center	0535-6632107
Zhifu District Medical Insurance Center	0535-6860036
Fushan District Medical Insurance Center	0535-2902190
Laishan District Medical Insurance Center	0535-6716231
Muping District Medical Insurance Center	0535-4332016
Penglai District Medical Insurance Center	0535-5665969
Haiyang Medical Insurance Center	0535-3221926
Laiyang Medical Insurance Center	0535-3363616
Qixia Medical Insurance Center	0535-5210423
Longkou Medical Insurance Center	0535-8501626
Zhaoyuan Medical Insurance Center	0535-4012333
Laizhou Medical Insurance Center	0535-2730150
Huang-Bohai New Area Social Insurance Service Center	0535-6957973
Hi-tech Zone Social Insurance Service Center	0535-6922047
Changdao Marine Ecological Civilization Comprehensive Pilot Zone Social Insurance Service Center	0535-3215425

IV. Judicial Services

(I) Legal Services

Foreigners who want to better understand the law or encounter legal problems while living and working in Yantai can consult the following services:

National Public Legal Service Hotline: 12348

The official website of Legal Services of China: www.12348.gov.cn

The official website of Yantai Justice Bureau: sfj.yantai.gov.cn

Yantai Law Society Tel: 0535-6250290

Official WeChat account: Yantai Judiciary

Tips:

Lawyers from two law firms in Yantai have been selected into

the "National List of One Thousand of Lawyers Specially Handling Foreign-related Matters" by the Ministry of Justice of the People's Republic of China.

Shandong Sunsum Law Firm Tel: 0535-6632392

S & P Law Firm (Yantai) Tel: 0535-6718060

(II) Legal Aid

According to the relevant provisions of Chinese law, provided that foreign defendants have no defense lawyers, legal aid institutions can appoint a lawyer to provide free defense for them upon receiving the notice from the people's court. Civil or administrative proceedings involving foreigners who have financial difficulties should be handled in accordance with international treaties or on the principle of reciprocity.

Service department: Yantai Legal Aid Center

Tel: 0535-6250596

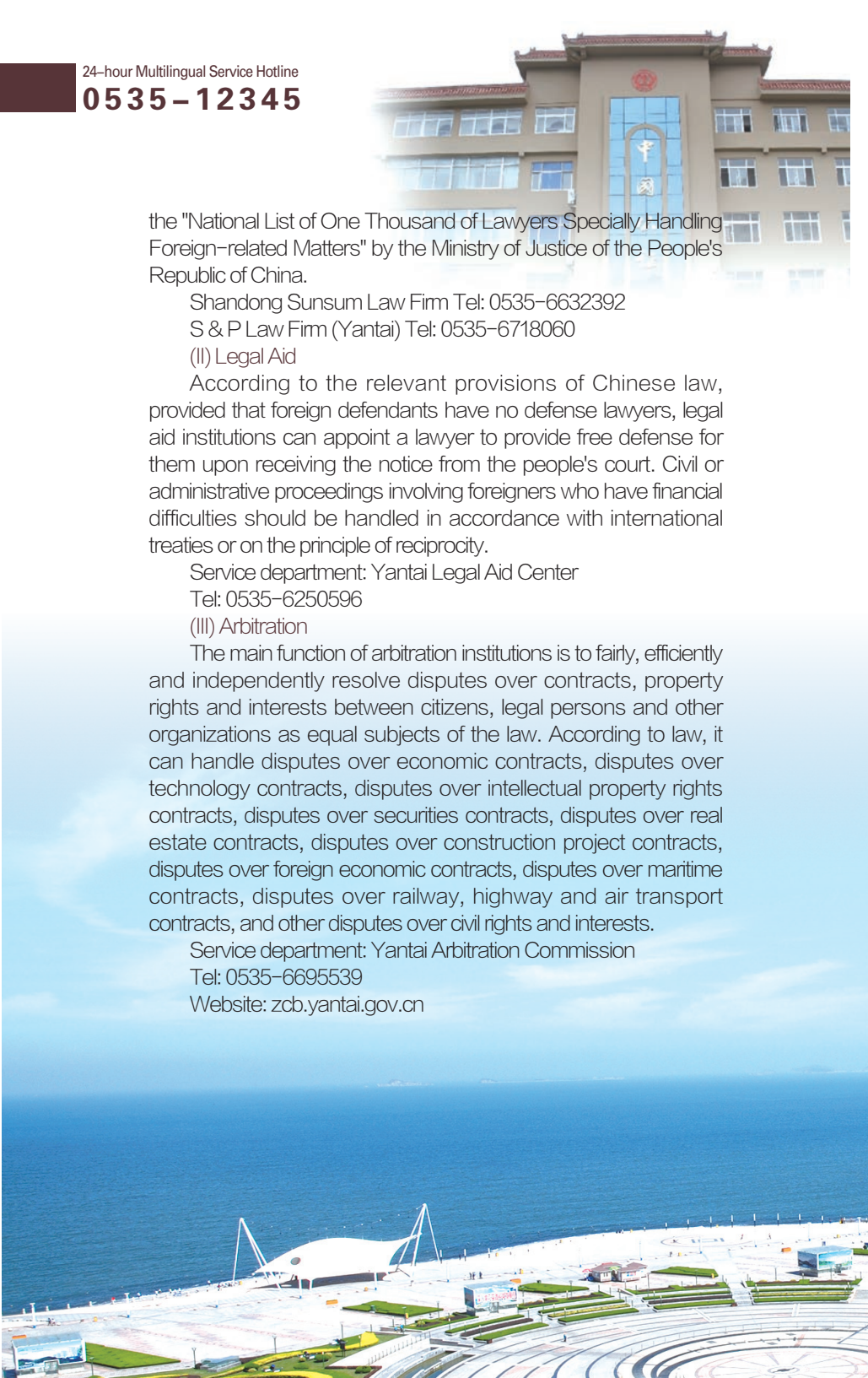
(III) Arbitration

The main function of arbitration institutions is to fairly, efficiently and independently resolve disputes over contracts, property rights and interests between citizens, legal persons and other organizations as equal subjects of the law. According to law, it can handle disputes over economic contracts, disputes over technology contracts, disputes over intellectual property rights contracts, disputes over securities contracts, disputes over real estate contracts, disputes over construction project contracts, disputes over foreign economic contracts, disputes over maritime contracts, disputes over railway, highway and air transport contracts, and other disputes over civil rights and interests.

Service department: Yantai Arbitration Commission

Tel: 0535-6695539

Website: zcb.yantai.gov.cn



(IV) Notary Services

Notary offices provide the following services:

Notarization of contracts, inheritance, delegations, declarations, bestowal and will, property division, bidding, tendering and auctions, marriage status, kindred and adoption relationships, birth, existence, death, identity, work experience, education background, degree, job title, professional and technical title, criminal record status, articles of association, preservation of evidence, signatures, seals, the date on documents, the consistency of photocopies and copies of documents with original documents, and other matters voluntarily requested by foreigners for notarization.

Foreign-related Notarization Service Agencies in Yantai

Name	Tel
Yantai Ludong Notary Public Office	0535-6632107
Yantai Zhifu Notary Public Office	0535-6860036
Yantai Fushan Notary Public Office	0535-2902190
Yantai Laishan Notary Public Office	0535-6716231
Yantai Muping Notary Public Office	0535-4332016
Yantai Penglai Notary Public Office	0535-5665969
Yantai Yeda Notary Public Office	0535-3221926
Haiyang Notary Public Office	0535-3363616
Laiyang Notary Public Office	0535-5210423
Qixia Notary Public Office	0535-8501626
Longkou Notary Public Office	0535-4012333
Zhaoyuan Notary Public Office	0535-2730150
Laizhou Notary Public Office	0535-6957973
Changdao Notary Public Office, Yantai	0535-6922047
Shandong Yantai Lanhai Notary	0535-3215425

(V) Security Administration

1. Foreigners who will stay in hotels shall provide their original passport or other valid documents and go through the formalities of temporary accommodation registration according to the regulations. Foreigners living or staying in residences other than hotels, or who are changing their place of residence, shall, within 24 hours after check-in, go to a local public security organ to register for temporary accommodation by themselves or the landlord;

2. Foreigners who come to hotels for visits shall go through visit registration formalities according to regulations;

3. Foreigners who return to their residences after exiting the province or China should register with the public security organs in the places where they reside within 24 hours of their arrival. This registration can be done by the individuals themselves or by their hosts/accommodators.

4. Foreigners who engage in conduct such as drug abuse, prostitution, and fighting have violated Chinese laws.

Tips:

Please search the Internet for detailed information on laws and regulations.



This image shows a full page of white paper with horizontal dashed lines, typical of primary school handwriting practice paper. The lines are evenly spaced and run across the entire width of the page. There are no margins, text, or other markings present.



Yantai Foreign Affairs Comprehensive Service Center
Yantai Foreigner Service Center



The Official WeChat Account of Yantai Foreigner Service Center